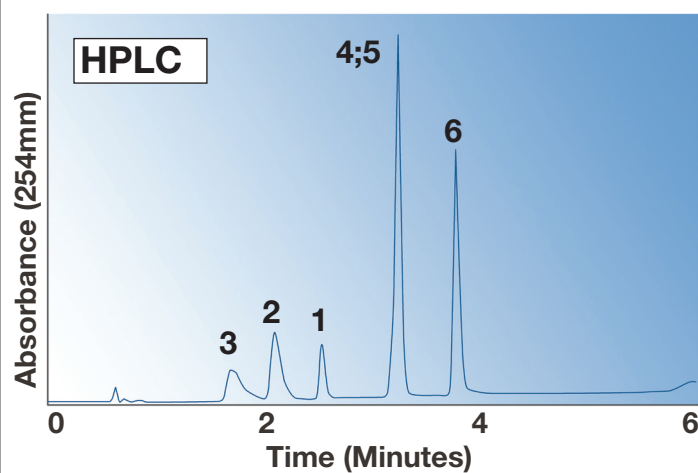
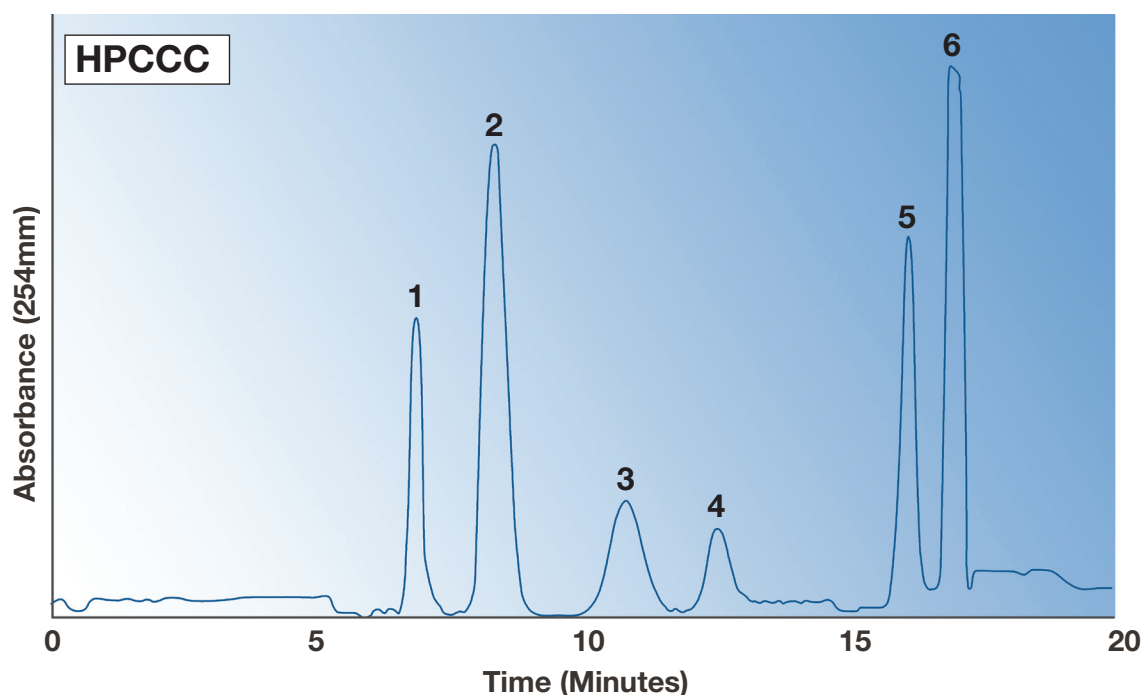


Selectivity and Orthogonality – HPCCC vs HPLC



Experimental Conditions

HPCCC

Column: Dynamic Extractions Mini HPCCC (19ml)
 Solvent System: HEMWat solvent systems 17
 Hexane/ethyl acetate/methanol/water [1:1:1:1]
 pH modifier: 0.1% TFA
 Loading: 2mg/25µl DMSO
 Flow rate: 2ml/min elution, 4ml/min extrusion
 Run Mode: low pH, reverse phase, Isocratic,
 elution-extrusion, 12min elution, 8min extrusion

HPLC

Column: Gemini NX, 3µm, C18, 110 Å (50 x 4.6mm)
 Solvent System: A= water+0.1% TFA, B= methanol +0.1% TFA
 Gradient: 0.0-3.5min 40-100%B
 3.5-5.0min 100%B
 5.0-7.0min 40%B
 Run Mode: Low pH, Reverse phase

Component	Chemical Name	HPCCC Elution Order	HPLC Elution Order	Comments
1	Dipyridamole	1	3	Elution order changed
2	4-Bromobenzamide	2	2	
3	Methyl 4-amino-3methylbenzoate	3	1	Elution order changed
4	Warfarin	4	4/5	Resolved by HPCCC
5	Methyl 2-acetamido-5-bromobenzoate	5	4/5	Resolved by HPCCC
6	Biphenyl	6	6	

Dynamic Extractions Ltd.

890 Plymouth Road, Slough, Berkshire SL1 4LP, United Kingdom.

Tel: +44 (0)1753 696979 Fax: +44 (0)1753 696976

Email: info@dynamicextractions.com www.dynamicextractions.com

Dynamic Extractions Ltd.

890 Plymouth Road, Slough, Berkshire SL1 4LP, United Kingdom.

Tel: +44 (0)1753 696979 Fax: +44 (0)1753 696976

Email: info@dynamicextractions.com www.dynamicextractions.com

