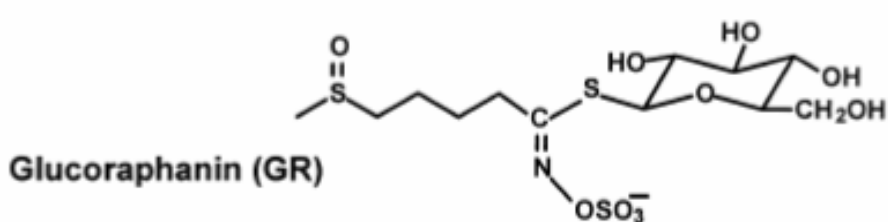
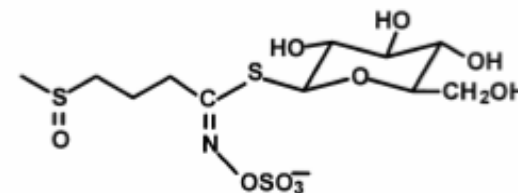


Separation Example: Polar Glucosinolates from Crude Broccoli

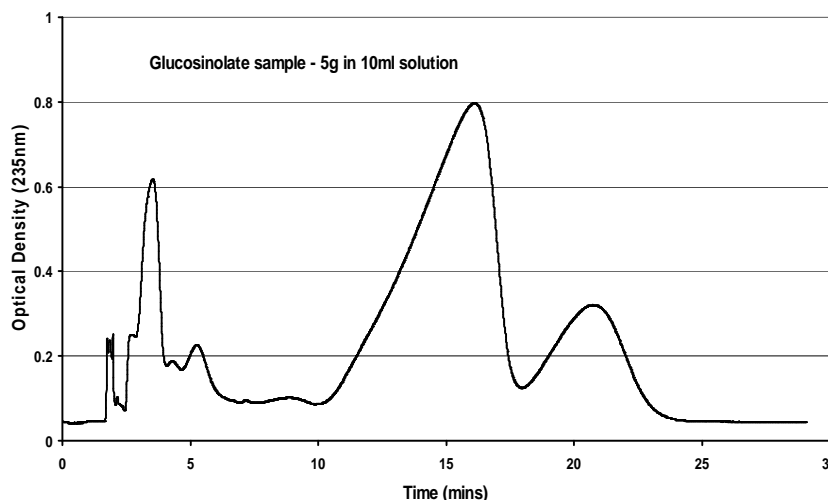


Glucoiberin (GI)



DE Midi HPLCC Conditions

- 950ml coil
- Stationary phase: ammonium sulphate solution (30% w/w)
- Mobile phase: 1-propanol/acetonitrile (2:1)
- Operating in normal phase
- Injection 5g crude extract in 10 ml phase.
- 30 minute run time.
- 10-12 runs per day.
- 45g GR purified in 3 days' work.



Analysis of Fractions by Hydrophilic Interaction Chromatography (HILIC)

- Column: polyhydroxyethyl aspartamide 100x4.6mm, 3 μ m, 100 \AA
- Mobile phase: 30mM ammonium formate, 85% acetonitrile, pH 4.5.
- Flow rate 2ml/min
- Detection 235nm.

